



Wollert
Primary School

Statement of Values & School Philosophy

Policy





Statement of Values and School Philosophy



Help for non-English speakers If you need help to understand the information in this policy, please contact the School.

PURPOSE

The purpose of this policy is to outline the values of our school community and explain the vision, mission and objectives of our school.

POLICY

Wollert Primary School is committed to providing a safe, supportive and inclusive environment for all students, staff and members of our community. Our school recognises the importance of the partnership between our school and parents and carers to support student learning, engagement and wellbeing. We share a commitment to, and a responsibility for, creating an inclusive and safe school environment for our students.

The programs and teaching at Wollert Primary School support and promote the principles and practice of Australian democracy, including a commitment to:

- elected government
- the rule of law
- equal rights for all before the law
- freedom of religion
- freedom of speech and association
- the values of openness and tolerance.

This policy outlines our school's vision, mission, objective, values and expectations of our school community.

Wollert Primary School is a Supported Inclusion School (SIS) that provides an environment where all student needs are catered for and everyone belongs. We pride ourselves in delivering high quality education for all in a learning community that embraces and values the uniqueness and character of every student. Every student at Wollert Primary School has the right to learn and is supported and celebrated in doing so.

As a supported inclusion school, Wollert Primary School engages quality inclusive education practices, including the provision of assessment, curriculum and pedagogy that is rigorous and accessible for all students, free of discrimination.



This includes the careful consideration and selection of the following features:

- the design and physical structures
- the teaching methods selected and implemented
- the curriculum framework
- the culture
- policies and practices

To celebrate and embed our Statement of Values and Philosophy in our school community, we

- display posters and banners that promote our values and philosophy in our school
- celebrate our values in our school communication
- discuss our values and philosophy with all members of our school community in the various forums in which school community members engage.

To celebrate and embed our school's inclusive culture, we will:

- Acknowledge that every student can and has the right to learn
- Focus on collaboration amongst staff, with support services and families.
- Focus on professional growth and risk-taking to help staff build skills in inclusive practice.
- Expect that inclusion is everybody's business.
- Acknowledge the individual needs of all students.
- Celebrate the strengths of every student
- Identify and eliminate barriers to exclusion
- Foster a culture where students with and without disability learn and grow side-by-side



VISION

Wollert Primary School's vision is to MAKE LEARNING HAPPEN FOR ALL.

MISSION

Wollert Primary School's mission is to be a school that provides an inclusive, inspiring and joyous learning environment where students are empowered to seize opportunities that help them achieve lifelong aspirations.

OBJECTIVE

Wollert Primary School's objective is to grow the minds and character unique to each child, developing 'I CAN' and 'I WILL' attitudes.

MOTTO

Aspirations without Limitations.

VALUES

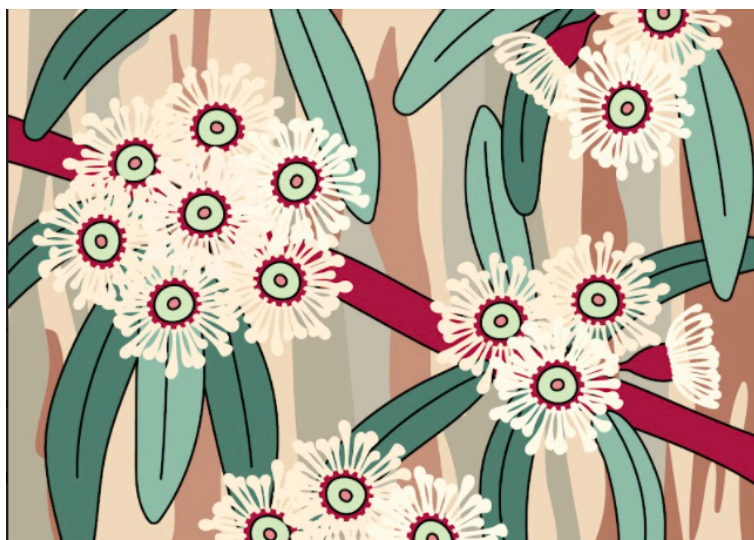
Our behaviour, attitude and actions

Wollert Primary School's values are: Be Kind, Be Curious, Be Brilliant, Be Joy

Be Kind frames our Social and Emotional brain – We express and demonstrate care, empathy, tolerance, acceptance in our actions of helping, assisting, active listening, noticing, acknowledging and 'heart' language.

Flowering snow gum – the blooms represent students coming together as one and supporting one another.

Winter



Be KIND is being inclusive and supportive of others. *We are friendly, empathetic and treat everyone equally.*



Be Curious frames our thinking and wondering brain – we express and demonstrate puzzlement, inquisitiveness, awe and learning in our actions of questioning, challenging, wondering, hypothesising and considering possibilities.



Gum leaves on the bushland floor – habitat for all sorts of interesting and amazing creatures. The illustration features curious ladybird explorers.

Autumn

Be CURIOUS is always wanting to learn new things.
*We ask questions to further our knowledge
and stretch our thinking.*

Be Brilliant frames our Achievement brain – we express and demonstrate self-awareness, self-acceptance, tenacity, grit and resilience in our actions of failing and rising, creating our own measures of success while committing to the expectations and agreements we have communally

Native wildflowers in bloom – a brilliant and vibrant celebration of colour and diverse natural beauty.

Summer



Be BRILLIANT is striving to always improve and persist through challenges. *We are resilient,
risk takers and committed to learning more.*

Be Joy frames our attitude brain – we express and demonstrate happiness, love, fun, positivity and optimism in our actions of play, humour, light heartedness, silliness, laughter, acknowledgement and appreciation.



Strawflowers beneath a sunny blue sky, their seeds dispersing on the wind – next spring, their flowers will bloom further afield, spreading joy and colour throughout the bushland.

Spring

Be JOY is finding times that spark our happiness and passions.. We use creativity, play and fun to help us learn.

COMMUNICATION

This policy will be communicated to our school community in the following ways:

- available publicly on our school's website
- included in staff induction processes
- available upon request

POLICY REVIEW AND APPROVAL

Policy last reviewed	August 2023
Approved by	School Council
Next scheduled review date	August 2026